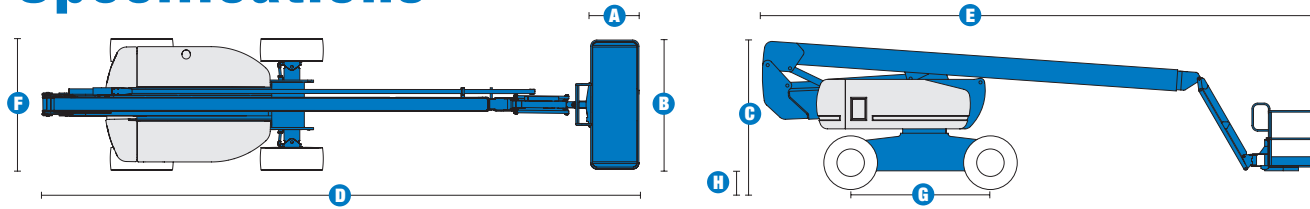


Specifications



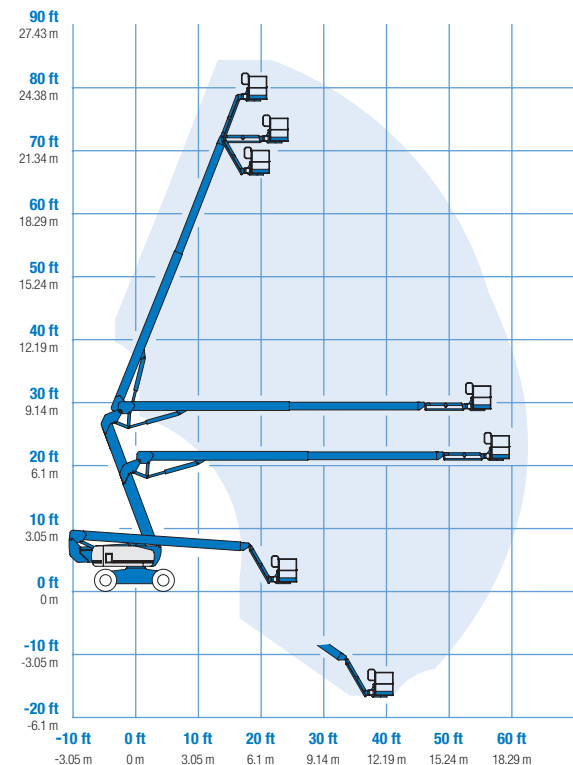
| MODEL | | Z™-80/60 | |
|--|--------------------------|-------------------------|--|
| MEASUREMENTS | US | Metric | |
| Working height maximum* | 84 ft | 25.77 m | |
| Platform height maximum | 78 ft | 23.77 m | |
| Horizontal reach maximum | 60 ft | 18.29 m | |
| Up and over clearance maximum | 29 ft | 8.83 m | |
| Below ground reach | 15 ft 10 in | 4.83 m | |
| A Platform length - 8 ft / 6 ft / 5 ft / 4 ft | 3ft/2ft6in/2ft6in/2ft6in | .91m/.76m/.76m/.76m | |
| B Platform width - 8 ft / 6 ft / 5 ft / 4 ft | 8ft/6ft/5ft/4ft | 2.44m/1.83m/1.52m/1.22m | |
| C Height - stowed | 9 ft 10 in | 3.00 m | |
| D Length - stowed | 37 ft | 11.27 m | |
| E Length - transport | 37 ft | 11.27 m | |
| F Width | 8 ft 2 in | 2.49 m | |
| G Wheelbase | 9 ft 4 in | 2.85 m | |
| H Ground clearance - center | 12 in | .30 m | |

| PRODUCTIVITY | | |
|----------------------------------|----------------------|-----------|
| Lift capacity | 500 lbs | 227 kg |
| Platform rotation | 160° | |
| Vertical jib rotation | 135° | |
| Turntable rotation | 360° continuous | |
| Turntable tailswing - riser up | 3 ft 10 in | 1.17 m |
| Turntable tailswing - riser down | 7 ft 4 in | 2.24 m |
| Drive speed - stowed | 3.0 mph | 4.83 km/h |
| Drive speed - raised** | 0.68 mph | 1.1 km/h |
| Lift speed to full height | 76 sec | |
| Gradeability - 2WD - stowed*** | 30% | |
| Gradeability - 4WD - stowed*** | 45% | |
| Turning radius - 2WS inside | 14 ft 6 in | 4.42 m |
| Turning radius - 2WS outside | 24 ft 6 in | 7.47 m |
| Turning radius - 4WS inside | 7 ft | 2.13 m |
| Turning radius - 4WS outside | 15 ft | 4.57 m |
| Controls | 12 V DC proportional | |
| Tires | 18-625 NHS | |

| POWER | | |
|--------------------------------------|---|-------|
| Power source | Deutz TD 2011 L04i 4 cylinder diesel 78 hp (58 kW) Perkins 804D-33 4 cylinder diesel 63 hp (47 kW) Continental TME27 4 cylinder gas/LPG 74 hp (55 kW) | |
| Auxiliary power unit | 12 V DC | |
| Hydraulic tank capacity | 45 gal | 170 L |
| Fuel tank capacity – diesel machines | 35 gal | 132 L |
| – gas/LPG machines | 30 gal | 114 L |

| WEIGHT**** | | |
|------------|------------|-----------|
| 2WS | 35,900 lbs | 16,284 kg |
| 4WS | 37,500 lbs | 17,010 kg |

RANGE OF MOTION Z™-80/60



* The metric equivalent of working height adds 2 m to platform height. U.S. adds 6 ft to platform height.

** In lift mode (platform raised), the machine is designed to operate on firm, level surfaces only.

*** Gradeability applies to driving on slopes. See operator's manual for details regarding slope ratings.

**** Weight will vary depending on options and/or country standards.

Features

EASILY CONFIGURED TO MEET YOUR NEEDS

PLATFORM OPTIONS

- Steel 8 ft (2.44 m) (standard)
- Steel 6 ft (1.83 m)
- Steel 6 or 8 ft (1.83 or 2.44 m) tri-entry
- Steel 4 ft (1.22 m)**
- Steel 5 ft (1.52 m)**

JIB

- 6 ft (1.83 m) jib boom

POWER OPTIONS

- Deutz diesel 78 hp (58 kW)
- Perkins diesel 63 hp (47 kW)
- Continental gas/LPG 74 hp (55 kW)

DRIVE/STEER OPTIONS

- 2WD (standard)
- 4WD
- 2WS (standard)
- 4WS

AXLE

- Active oscillation

TIRE OPTIONS

- Rough terrain foam-filled (standard)
- Rough terrain non-marking foam-filled
- High flotation rough terrain

* Available on select models

** Not available on CE models

STANDARD FEATURES

MEASUREMENTS:

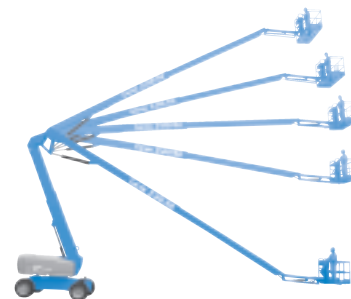
- 84 ft (25.77 m) working height
- 60 ft (18.28 m) horizontal reach
- 29 ft (8.83 m) up and over clearance
- Up to 500 lb (227 kg) lift capacity

PRODUCTIVITY

- 6 ft (1.83 m) jib with 135° range
- Self-leveling platform
- Hydraulic platform rotation
- Fully proportional Hall effect controls
- On-board diagnostics
- ALC 1000 electronic control system
- Hydraulic oil cooler
- Drive enable
- AC power cord to platform
- Horn
- Hour meter
- Tilt alarm
- Descent alarm
- 360° continuous turntable rotation
- Locking turntable covers
- Full-time positive traction drive
- Two speed wheel motors
- Four steering modes: front, rear, crab and coordinated
- Configurable controls to limit lift height to 70 ft

POWER

- All engines are emissions compliant
- 12 V DC auxiliary power
- Anti-restart engine protection
- Auto engine fault shutdown
- Engine monitoring display
- Block heater (Continental engine)
- Dual battery
- Engine status display



OPTIONS & ACCESSORIES

PRODUCTIVITY

- Platform swing gate
- Half-mesh platform inserts with swing gate
- Platform top auxiliary rail
- Arc Pro 275™ Heavy-Duty Welder package
- Welder Ready package
- Weld leads to platform
- Air line to platform
- Fire resistant hydraulic oil
- Biodegradable hydraulic oil
- Basic hostile environment kit
- Deluxe hostile environment kit
- Thumb rocker steer
- Deluxe aircraft protection package (6 ft platform only)
- Tool tray
- Fluorescent tube caddy
- Pipe cradles (pair)
- Alarm package
- Panel cradle package*
- Platform work lights
- Front driving lights
- Lockable platform control box covers

POWER

- AC generator packages (110V/60Hz, 3000W or 220V/50Hz, 2500W)
- Cold Weather Packages
- Arctic Packages
- Diesel scrubber/spark arrestor
- Diesel spark arrestor muffler
- LPG tank only, steel, 33.5 lb (15.19 kg) capacity
- Additional LPG tank with carrier
- Retained key selector switch

Genie United States

18340 NE 76th Street
P.O. Box 97030
Redmond, Washington 98073-9730

Telephone **+1 (425) 881-1800**
Toll Free in USA/Canada **+1 (800) 536-1800**
Fax +1 (425) 883-3475

Genie Europe

Millennium House
Brunel Drive
Newark NG24 2DE
UK

Telephone **+44 (0)1476 584333**
Fax +44 (0)1476 584334

Email: infoeurope@genieind.com

Distributed By:

Effective Date: January, 2009. Product specifications and prices are subject to change without notice or obligation. The photographs and/or drawings in this document are for illustrative purposes only. Refer to the appropriate Operator's Manual for instructions on the proper use of this equipment. Failure to follow the appropriate Operator's Manual when using our equipment or to otherwise act irresponsibly may result in serious injury or death. The only warranty applicable to our equipment is the standard written warranty applicable to the particular product and sale and we make no other warranty, express or implied. Products and services listed may be trademarks, service marks or trade-names of Terex Corporation, Genie Industries, Inc. and/or their subsidiaries in the U.S.A. and many other countries and all rights are reserved. Terex is a Registered Trademark of Terex Corporation in the U.S.A. and many other countries. Genie is a Registered Trademark of Genie Industries, Inc. in the U.S.A. and many other countries. Genie is a Terex Company. © 2009 Terex Corporation.