

Telehandler

OPERATING WEIGHT	10,000 lbs (4,536 kg)
NET ENGINE POWER	63 hp (47 kW)
MAXIMUM LIFT CAPACITY	5,500 lbs (2,495 kg)
MAXIMUM LIFT HEIGHT	18' 10" (5.74 m)



TELEHANDLER
GTH-5519

Specifications

Performance	
Operating weight with forks	10,000 lbs (4,536 kg)
Inside/outside turn radius	5' 6" / 11' (1.68 / 3.35 m)
Maximum drawbar pull	10,250 lbs (4,649 kg)
Maximum lifting height	18' 10" (5.74 m)
Reach at maximum height	1' 10" (0.56 m)
Maximum forward reach	11' 3" (3.43 m)
Maximum lift capacity	5,500 lbs (2,495 kg)
Lift capacity at maximum height	4,400 lbs (1,996 kg)
Lift capacity at maximum reach	1,700 lbs (771 kg)
Obstruction angle	90°
Departure angle	70°
Fork-holder plate rotation	135°

Engine	
Diesel direct injection, oil cooled	
4 cylinders naturally aspirated	
Net power @ 2,600 rpm (DIN 70020)	63 hp (47 kW)
Deutz BF4M2011, Tier II	
Cold start intake glow plug	

Steering	
Power assisted steering	
Three steering modes: 2-wheel, 4-wheel coordinated, and 4-wheel crab	

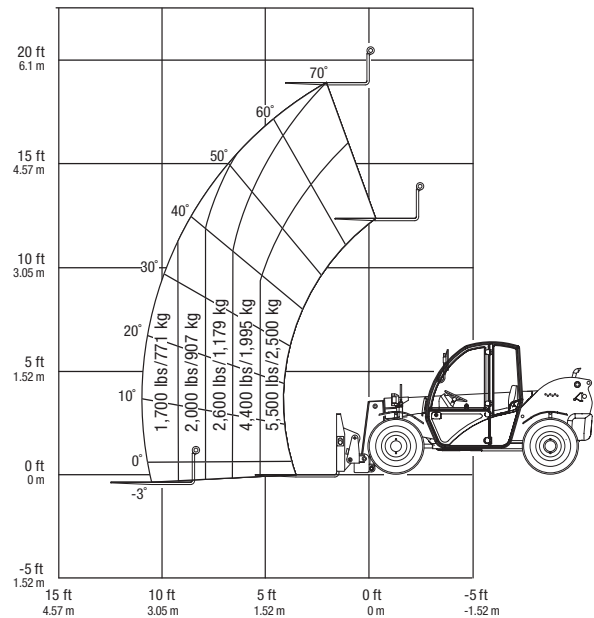
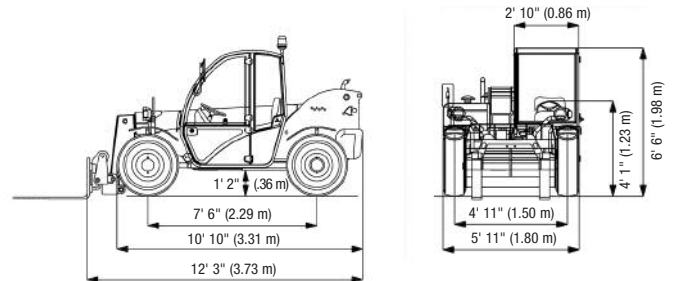
Telehandler GTH-5519

Specifications

Transmission	
Hydrostatic closed circuit, continuous speed regulation, variable displacement pump and motor	
Mechanical dropbox	
4-wheel drive	
Limited-slip front axle differential	
Maximum speed	15 mph (24.1 km/h)
Brakes	
Wet disc	
Hydraulic System	
Fixed displacement hydraulic pump for proportional functions, hydraulic steering, quick coupling and tools	
17 gpm (64 Lpm) flow rate at 3,918 psi (270 bar) system pressure	
Tank Capacities	
Fuel	16 gal (60 L)
Hydraulic oil	19 gal (70 L)
Hydraulic system capacity (w/tank)	32 gal (120 L)
Tires	
Type	12 x 16.5, 10 ply
8-holes wheel disk (DIN 70361)	
Standards Compliance	
ASME B 56.6, ISO 8471, ISO 8449	
Forks and Attachment Holder Plate	
Type	FEM 2
Length	48" (1.22 m)
Fork cross-section	1.6" x 4" (40 mm x 100 mm)
Attachment holder plate with hydraulic quick attach coupling	

Operating Cab
Structure conforms to ISO 8471 (ROPS) and ISO 8449 (FOPS)
Optional enclosed cab, heater and A/C
Attachments and Accessories
A wide range of accessories and attachments for civil and industrial work is available; please ask for quote.

Dimensions and Working Ranges



Genie Industries, Inc.

A Terex company

18340 NE 76th Street
PO Box 97030
Redmond, WA 98073-9730

TEL 425-881-1800
TOLL FREE 800-536-1800
PARTS & TECH SUPPORT 888-201-6008
FAX 425-883-8475
WEB terex.com

For more information, product demonstration, or details on purchase, lease and rental plans, please contact your local Genie Distributor.

Effective date: August 15, 2006. For further information, please contact your local distributor or the Terex sales office listed. Product specifications are subject to change without notice or obligation. The photographs and drawings in this brochure are for illustrative purposes only. Refer to the appropriate Operator's Manual for instructions on the proper use of this equipment. Failure to follow the appropriate Operator's Manual when using our equipment or to otherwise act irresponsibly may result in serious injury or death. Prices and specifications subject to change without notice. The only warranty applicable is the standard written warranty applicable to the particular product and sale. Terex makes no other warranty, expressed or implied. Products and services listed may be trademarks, service marks or trade-names of Terex Corporation and/or its subsidiaries in the USA and other countries and all rights are reserved. "Terex" is a Registered Trademark of Terex Corporation in the USA and many other countries. Copyright ©2006 Terex Corporation